



Water utilities remote management

As a real expert in electrical and automatic engineering, SYLENE offers all its know-how for the implementation of technical solution in the field of water utilities remote management.

Thanks to our turnkey solutions, you'll be able to manage your water distribution network by taking in account all economic and environmental constraints.

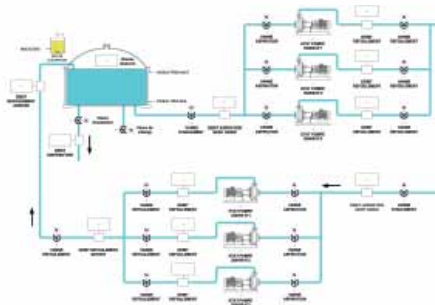


Applications :

- Water pumping stations, drillings
- Transfer stations, water tanks
- Drinking water treatment plants
- Control centers for hydraulic grid

Skills :

- Electrical engineering for high and low voltage
- Engineering for water pumps sizing
- Instrumentation of water (flow, pressure, temperature) and process (vibrations, drives supervising)
- Automatic design, PLC programming
- Remote control of isolated or geographically widespread plants
- Radio communication, GSM and other protocols
- Specific supervision and SCADA systems
- Remote alarming for failure or malfunction



As a real expert in electrical and hydraulic engineering, SYLENE has always succeeded in combining reliable technologies to fulfill final customer needs. Protection of natural resources is always considered as a major issue.

SYLENE

68, rue Louis Berthollet Z.I. BISSY - 73000 CHAMBERY
Tel. +33 4 79 68 22 25 - Fax +33 479 69 71 61

www.sylene.fr



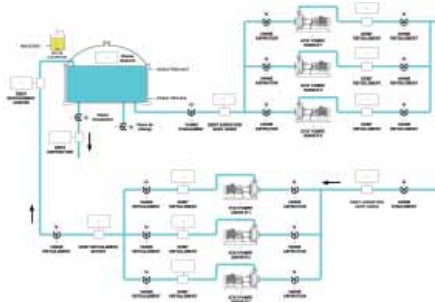
Applications :

- Stations de pompage, forages.
- Stations de relevage, canalisations de transfert
- Traitement de l'eau potable
- Réservoirs de stockage
- Distribution
- Centres de contrôle



Compétences :

- Dimensionnement électrique et hydraulique du parc machine
- Ingénierie électrique basse et haute tension
- Instrumentation du fluide (débit, pression, niveau, etc ...) et du process (surveillance moteurs, vibrations)
- Automates programmables
- Télégestion de l'ensemble des installations
- Communication par système radio, GSM ou autre protocole.
- Systèmes de supervision dédiés
- Gestion des logistiques d'astreinte



.....

Véritable expert en ingénierie électrique et en télégestion, SYLENE à toujours su conjuguer les synergies entre l'administration et les exploitants en apportant des technologies fiables et adaptées à la protection des ressources naturelles.

SYLENE

68, rue Louis Berthollet Z.I. BISSY - 73000 CHAMBERY
Tel. +33 4 79 68 22 25 - Fax +33 479 69 71 61

www.sylene.fr